



ZIMMER BIOMET

Your progress. Our promise.



# Trabecular Metal™ Dental Implant

Rapid Recovery With BioBoost™ Effect

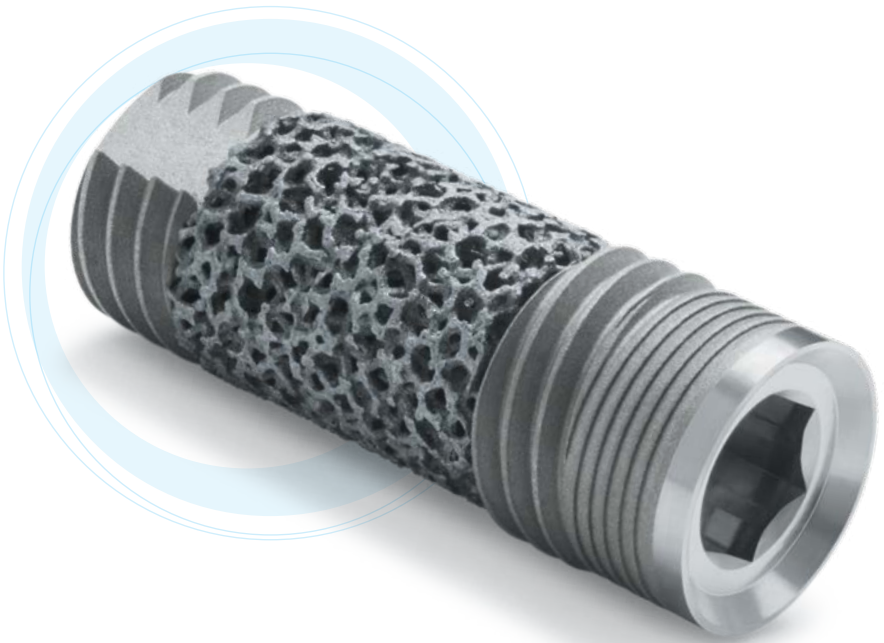
The Fast Track To Smiling Again

# Trabecular Metal Dental Implant

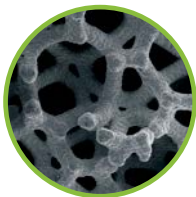
Rapid Recovery With BioBoost™ Effect

Traditional dental implants serve as an artificial tooth and have been used for many decades with high rates of success.

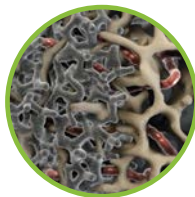
The *Trabecular Metal* Dental Implant leverages the *BioBoost Effect* to naturally accelerate implant healing to get your smile back faster.<sup>1-3</sup> Talk to your doctor today to see if a streamlined treatment protocol with the *Trabecular Metal* Dental Implant is an option for you.



Artistic Rendering



Trabecular Metal  
Material



Osseointegration  
Bone Ongrowth  
+ Bone Ingrowth\*



Your  
Trabecular  
Bone



## How May The Trabecular Metal Dental Implant Benefit Me?

**Shorter Treatment Time:** *Trabecular Metal* Dental Implants with the *BioBoost Effect* may enable you to get your final teeth in weeks rather than months after implantation.<sup>4-6</sup> Several studies document the benefits of the *BioBoost Effect* to accelerate implant healing and put select patients on the fast track to tooth replacement.<sup>1-6</sup> Your doctor will ultimately decide case completion time based on your individual situation

**Peace Of Mind:** Unlike conventional implants, the *Trabecular Metal* Implant offers three-dimensional bone ingrowth designed for early implant stability.<sup>1</sup> Therefore, the *Trabecular Metal* Dental Implant may offer beneficial conditions for accelerated renewal of tooth function and aesthetics.

Bone  
Ongrowth



Traditional  
Dental Implant

Bone Ongrowth  
+ Bone Ingrowth



Trabecular Metal  
Dental Implant



Before Surgery



Final Restoration at 14 Days\*



2 Weeks After Surgery

\*NOTE: Individual results may vary and case shown is not a guarantee of success.

While this brochure is designed to address some of the frequently asked questions about *Trabecular Metal* Dental Implants, your doctor remains the best source for information regarding dental implants and whether this product is right for you. Your doctor will advise you on specific procedural expectations, warnings, risks, contraindications and potential adverse effects associated with a dental implantation procedure, as well as individual post-operative care instructions and answers to any additional questions or concerns you may have.

1. de Arriba, C.C., Alobera Gracia, M.A., Coelho, P.G., Neiva, R., Tarnow, D.P., Del Canto Pingarron, M., and Aguado-Henche, S., Osseoincorporation of Porous Tantalum Trabecular-Structured Metal: A Histologic and Histomorphometric Study in Humans. *Int J Periodontics Restorative Dent*, 2018. 38(6): p. 1-7.
2. Bencharit, S., Barros, S., Morelli, T., and Offenbacher, S., Biological Effects of Porous Tantalum Trabecular Metal in the Oral Cavity, in *Academy of Osseointegration*. 2016: San Diego, CA.
3. Lee, J.W., Wen, H.B., Gubbi, P., and Romanos, G.E., New bone formation and trabecular bone microarchitecture of highly porous tantalum compared to titanium implant threads: A pilot canine study. *Clin Oral Implants Res*, 2018. 29(2): p. 164-174.
4. Wen, H.B., van der Schoor, W.P., van der Schoor, A.R., and Schlee, M., Immediate Nonocclusal Loading of Trabecular Metal-Enhanced Titanium Dental Implants in a Controlled Population: 5-Year Results, in *The 103rd Annual Meeting of American Academy of Periodontology*. 2017: Boston, MA,.
5. Brauner, E., Jamshir, S., Di Carlo, S., Pagnoni, M., Guarino, G., and Pompa, G., Immediate implant loading: a comparison of Trabecular Metal and Tapered Screw-Vent dental implants. *OHDM*, 2015. 14(2): p. 1-6.
6. Peron, C. and Romanos, G., Immediate loading of tantalum-based implants in fresh extraction sockets. Long-term outcomes, in *European Academy of Osseointegration*. 2018: Vienna, Austria



**ZIMMER BIOMET**  
Your progress. Our promise.

[www.zimmerbiometdental.com](http://www.zimmerbiometdental.com)

Zimmer Biomet Dental  
Global Headquarters  
4555 Riverside Drive  
Palm Beach Gardens, FL 33410  
Tel: +1-561-776-6700  
Fax: +1-561-776-1272

Unless otherwise indicated, as referenced herein, all trademarks are the property of Zimmer Biomet; and all products are manufactured by one or more of the dental subsidiaries of Zimmer Biomet Holdings, Inc. and marketed and distributed by Zimmer Biomet Dental and its authorized marketing partners. For additional product information, please refer to the individual product labeling or instructions for use. Product clearance and availability may be limited to certain countries/regions. This material does not comprise medical advice or recommendations. This material may not be copied or reprinted without the express written consent of Zimmer Biomet Dental. ZB0503 REV A 12/18 ©2018 Zimmer Biomet. All rights reserved.

