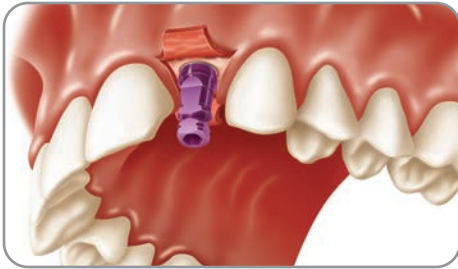
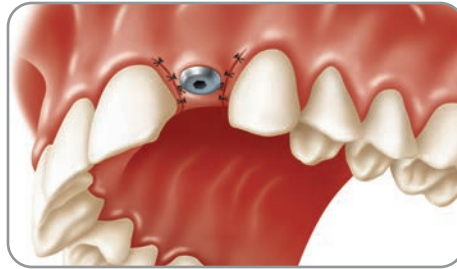


Contour Zirconia Abutment

For Tapered Screw-Vent® and Trabecular Metal™ Systems



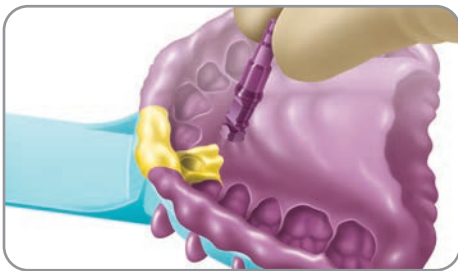
1. During placement, orient the flat of the pre-attached Fixture Mount/Transfer toward the buccal/labial surface. This ensures that the flat of the internal hex is in the correct orientation.



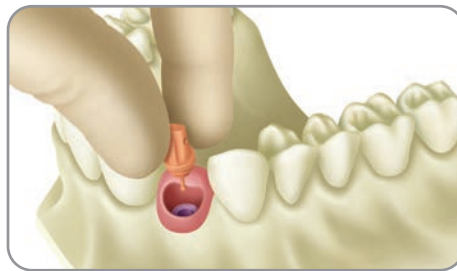
2. Place a healing collar or provisional restoration in a single-stage procedure for soft-tissue contouring.



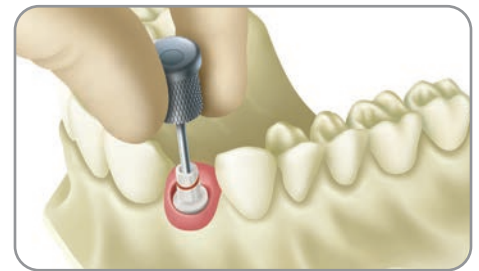
3. Use a light to medium-body material around the transfer and record a full-arch impression with medium-body material. Remove the transfer from the implant after the impression has been taken.



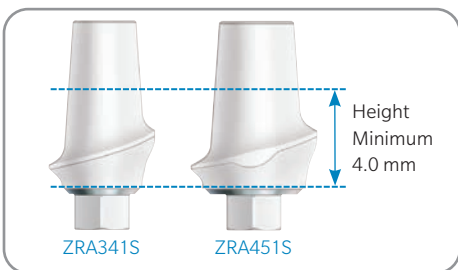
4. Attach an Implant Analog to the transfer with the 1.25 mmD (0.050") Hex Tool and re-insert into the impression. Send the impression to the laboratory.



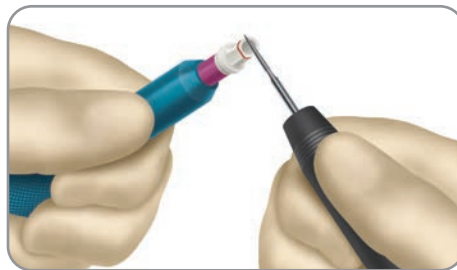
5. Pour the cast in die stone. Use soft-tissue material to represent gingival contours. Use the Contour Zirconia Abutment Try-ins to help select the appropriate angle and cuff height of the final abutment.



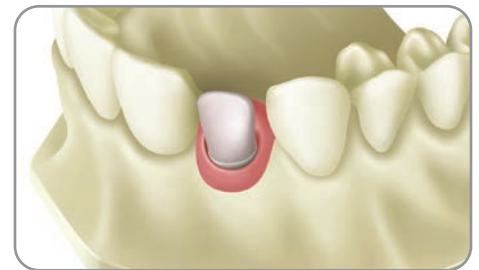
6. Mark the Contour Zirconia Abutment for required modifications to achieve appropriate vertical clearance as well as gingival contours.



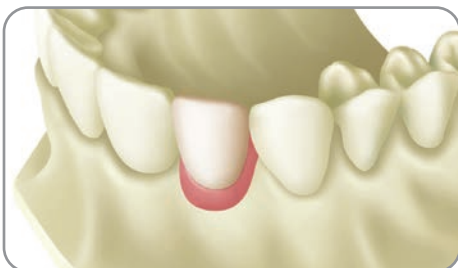
7. Prepare the zirconia abutment according to the Instructions for Use. Do not reduce the coronal wall of the 3.5 mmD zirconia abutment.



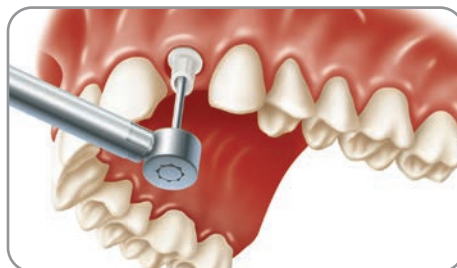
8. Modify the abutment with burs specifically designed for use with zirconia. Preparation with water is highly recommended.



9. Prepare the coping using traditional prosthodontic techniques.



10. Complete the final restoration according to traditional laboratory procedures.



11. Place the zirconia abutment and tighten the retaining screw to 30 Ncm with a calibrated prosthetic torque wrench.



12. Block out the screw access channel in the abutment and cement the final prosthesis to complete the restoration.

Contour Zirconia Abutment Restorations

Ordering Information

Contour Zirconia Abutments, Straight



Item #	Implant Platform	EP*	Cuff Height
ZRA341S	3.5 mmD	4.5 mmD	1.0 mm
ZRA342S	3.5 mmD	4.5 mmD	2.0 mm
ZRA451S	4.5 mmD	5.5 mmD	1.0 mm
ZRA452S	4.5 mmD	5.5 mmD	2.0 mm

*Emergence Profile

Contour Zirconia Abutments, 17°



Item #	Implant Platform	EP*	Cuff Height
ZRA351A	3.5 mmD	5.0 mmD	1.0 mm
ZRA352A	3.5 mmD	5.0 mmD	2.0 mm
ZRA461A	4.5 mmD	6.0 mmD	1.0 mm
ZRA462A	4.5 mmD	6.0 mmD	2.0 mm

*Emergence Profile

Transfer Components



Item #	Implant Platform	Emergence Profile
ZOAT34	3.5 mm	4.5 mm
ZOAT45	4.5 mm	5.5 mm
ZOAT56	5.7 mm	6.5 mm
ZOATKIT	All	All

Direct Transfers



Item #	Implant Platform	Emergence Profile
DHT3/3	3.5 mmD	3.5 mmD
DHT3/4	3.5 mmD	4.5 mmD
DHT3/5	3.5 mmD	5.5 mmD
DHT4/4	4.5 mmD	4.5 mmD
DHT4/5	4.5 mmD	5.5 mmD
DHT4/6	4.5 mmD	6.5 mmD

Indirect Transfers



Item #	Implant Platform	Emergence Profile
HLT3/3	3.5 mmD	3.5 mmD
HLT3/4	3.5 mmD	4.5 mmD
HLT3/5	3.5 mmD	5.5 mmD
HLT4/4	4.5 mmD	4.5 mmD
HLT4/5	4.5 mmD	5.5 mmD
HLT4/6	4.5 mmD	6.5 mmD
HLT5/6	5.7 mmD	6.5 mmD

Tools



Item #	Description
HX1.25	Hex Tool, 1.25 mmD
HXL1.25	Long Hex Tool, 1.25 mmD
THX1.25	Tapered Frictional Hex Tool, 1.25 mmD
THXL1.25	Long Tapered Frictional Hex Tool, 1.25 mmD
TW30	Prosthetic Torque Wrench, 30 Ncm
TW1.25	Torque Wrench Hex Driver, 1.25 mmD
TW1.25L	Long Torque Wrench Hex Driver, 1.25 mmD
TLRT2	Abutment Removal Tool

Analogs



Item #	Implant Platform
IA3	3.5 mmD
IA4	4.5 mmD
IA5	5.7 mmD

Titanium-to-Titanium Fit

Titanium ring allows an intimate fit between the abutment and implant¹.



For a complete list of products and tooling, please refer to the current product catalog.

¹ Joo W. Contour Ceramic Abutments. Precision-engineered for strength, esthetics & clinical versatility. Dental Inc. 2008;2:34-38.

Contact us at 1-800-342-5454 or visit zimmerbiometdental.com

Zimmer Biomet Dental
Global Headquarters
4555 Riverside Drive
Palm Beach Gardens, FL 33410
Tel: +1-561-776-6700
Fax: +1-561-776-1272

Unless otherwise indicated, as referenced herein, all trademarks are the property of Zimmer Biomet, and all products are manufactured by one or more of the dental subsidiaries of Zimmer Biomet Holdings, Inc. and marketed and distributed by Zimmer Biomet Dental and its authorized marketing partners. For additional product information, please refer to the individual product labeling or instructions for use. Product clearance and availability may be limited to certain countries/regions. This material is intended for clinicians only and does not comprise medical advice or recommendations. Distribution to any other recipient is prohibited. This material may not be copied or reprinted without the express written consent of Zimmer Biomet Dental. ZBINST0010 REV B 12/19 ©2019 Zimmer Biomet. All rights reserved.

