

OverdenSURE™ Solutions



Full-Arch Rehabilitation

Edentulism and failing dentition continue to be major health challenges affecting millions of people worldwide.

- It is conservatively estimated that 10% of the world's population of six billion is partially edentulous or edentulous¹

In spite of advances in denture prosthodontics, soft-tissue supported dentures continue to be a source of:

- Chronic residual ridge resorption
- Facial collapse
- A loose or poor fit
- Decreased masticatory function
- Phonetic challenges

Edentulism in the U.S.:

- The U.S. population of adults requiring dentures is estimated to increase by 13% from 1991 to 2020²
- Approximately 62% of the population will require dentures in both arches by 2020²
- The total number of edentulous arches is expected to increase to approximately 61 million by 2020²



Clinical photograph showing severe bone resorption and a narrow mandibular ridge.

Photo courtesy of Dr. Michael Scherer†

OverdenSURE System Solutions

Zimmer Biomet Dental offers a variety of solutions that simplify bar-supported and implant-retained overdenture therapy for clinicians, while providing an improved quality of life for each patient. Options for overdenture therapy include the three most common treatment modalities.

Bar-Supported Overdentures

- Removable restoration for easier oral hygiene



Implant-Supported Overdentures

- Addresses problems such as limited interocclusal space through the LOCATOR® Abutment's low restorative height



LOCATOR® Overdenture Implant System (LODI)

- Narrow diameter implant designed for severely resorbed narrow ridges (<5.0 mm in width)
- Less invasive and more affordable treatment plan
- Easy and intuitive surgical kit and protocol

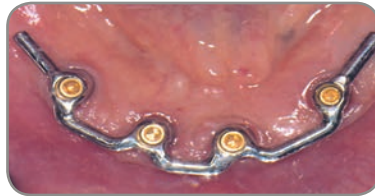


Bar-Supported Overdentures

A prosthesis, supported by Zimmer Biomet Dental Implants and a BellaTek Bar or Framework, provides patients with an alternative to conventional dentures. Patients benefit from a high level of denture support while enjoying the convenience of a removable restoration for easier oral hygiene.



BellaTek Hader Bar placed onto the master cast.



BellaTek Hader Bar in place.



Definitive overdenture in place.

Case Photos Courtesy Of: Joseph Carpentieri, DDS And Marotta Dental Studio



Bar Overdenture Restorative Components

Restorative Components

- Flexibility in overdenture-to-bar retention components with LOCATOR Bar Attachments
- Gold-Tite® Screw technology provides up to 113% greater clamping force with the Certain® connection than a titanium alloy screw^{3*}



BellaTek Hader & DOLDER® Bars

BellaTek Bar Removable Designs

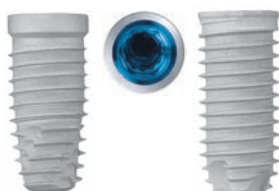
- Tested for a passive fit at the BellaTek Production Center
- Both designs provide lateral stability to the overdenture
- Designed and milled with CAD/CAM precision



Low Profile Abutments

Low Profile Abutments

- Angled Low Profile Abutments are a great option for angle-correcting Zimmer Biomet Dental Implants to a BellaTek Bar
- Low restorative height of 2.2 mm for limited interarch spaces
- Contoured emergence profile for easier placement in subcrestal and flapless surgeries



T3 Platform-Switched Certain Tapered & Parallel Walled Implants

T3® Platform-Switched Implants

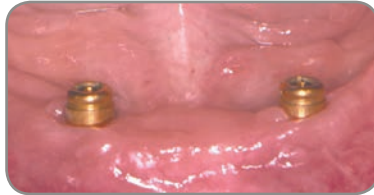
- Building on the proven Osseotite® design, the T3 Implant features a contemporary hybrid with the Osseotite surface that has shown no increased risk of peri-implantitis as compared to machined surfaces⁴
- Platform switching provides a medialized implant-to-abutment junction that yields support for connective tissue that has been shown to reduce the amount of bone recession by as much as 50%⁵

Implant-Retained Overdentures

Together with Zimmer Biomet Dental Implants, LOCATOR® Abutments are an ideal option for overdenture restorations, providing increased denture stability and retention for patients wearing conventional dentures.



Osseotite® Certain® Implants in place.



LOCATOR Abutments in place.



Definitive overdenture in place.

Case Photos Courtesy Of: Joseph Carpentieri, DDS



LOCATOR Components

Restorative Components

- Self-aligning design allows patients to easily place their overdenture
- Various levels of retention and draw correction options are available



LOCATOR Abutments

LOCATOR Abutments

- A stable and tight implant-to-abutment interface
- Dual retention design assists in long-lasting performance of the LOCATOR Abutment and overdenture components
- Allows for the restoration of divergent implants for restorative flexibility



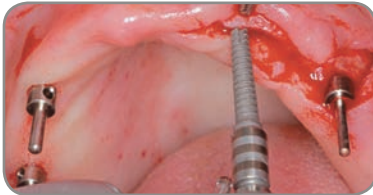
Osseotite Certain PREVAIL® Tapered & Parallel Walled Implants

Osseotite Platform-Switched Implants

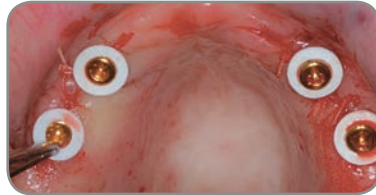
- Dual acid-etched surface topography to aid in osseointegration
- Macro-geometry assists initial bone-to-implant contact by closely integrating the implant-to-osteotomy fit
- Platform switching provides a medialized implant-to-abutment junction that yields support for connective tissue that has been shown to reduce the amount of bone recession by as much as 50%⁶

LOCATOR Overdenture Implant System

This system, also referred to as LODI, benefits patients with resorbed, very narrow ridges who need a less invasive and more affordable treatment option.



Two 2.4 mm and two 2.9 mm LOCATOR Overdenture Implants in place.



LOCATOR Overdenture Implant System Attachments and White Spacers in place.



The denture was processed and picked-up with standard LOCATOR components and securely seated.

Clinical Treatment by Dr. Par-Olov Östman†, Falun, Sweden



LOCATOR Overdenture Implant System All-inclusive Package

LOCATOR Overdenture Implant System Restorative Components

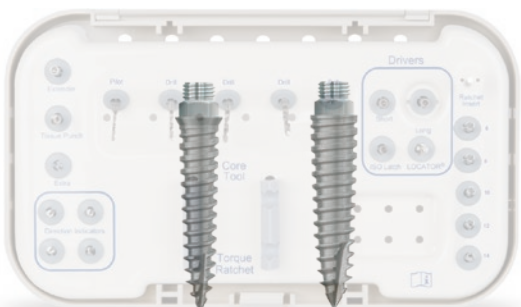
- All inclusive package contains one implant, one LOCATOR Attachment and one male processing pack
- LOCATOR Attachments are compatible with all standard LOCATOR Components
- Same LOCATOR technology



LOCATOR Overdenture Implant System Attachments

LOCATOR Overdenture Implant System Restorative Attachments

- Choice of 2.5 mm and 4.0 mm cuff height both with a 2.9 mm seating diameter for restorative flexibility and ease of use



LOCATOR Overdenture Implants

LOCATOR Overdenture Implants

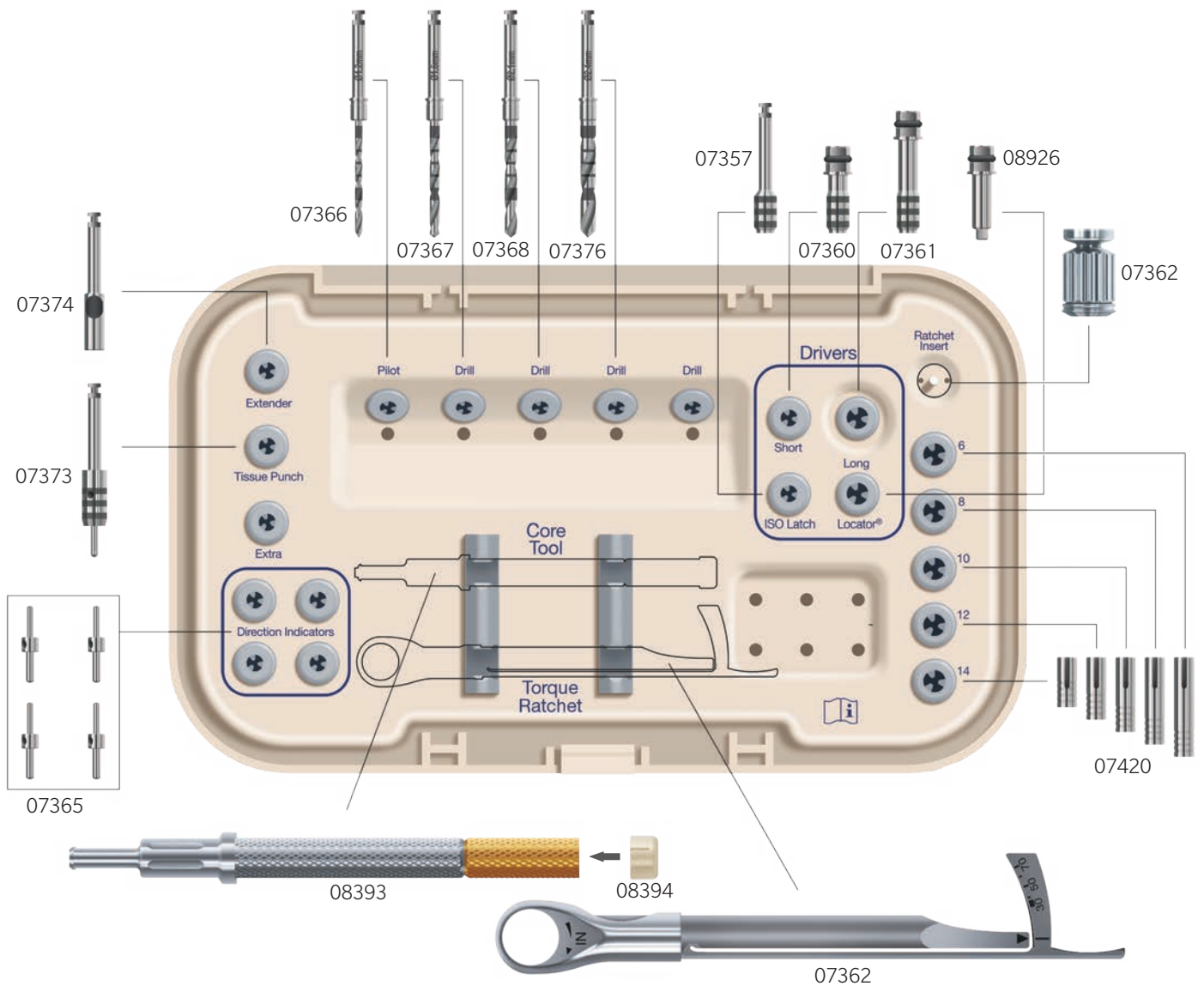
- Self-tapping design for ease of implant insertion and increased stability
- Proven RBM roughened surface of 1.5 microns along the entire length of the implant
- Choice of 2.4 mm and 2.9 mm implant diameters in 10, 12 and 14 mm lengths (All implants feature a 2.9 mm seating diameter for restorative simplicity)

LOCATOR Overdenture Implant System

Surgical Instrument Kit Schematic

All of the LOCATOR Overdenture Implant System osteotomy preparation instruments include easily identifiable laser-etched depth markings for clear visibility when drilling and placing implants.

A drill-stop set is also included for an additional level of depth control.





Ordering Information

LOCATOR Abutments

Seating Surface	Collar Height	Certain Internal Connection	External Hex Connection
 3.4 mm	1.0 mm	IMLOA001	MLOA001
	2.0 mm	IMLOA002	MLOA002
	3.0 mm	IMLOA003	MLOA003
	4.0 mm	IMLOA004	MLOA004
	5.0 mm	IMLOA005	MLOA005
	6.0 mm	IMLOA006	MLOA006
 4.1 mm	1.0 mm	ILOA001	LOA001
	2.0 mm	ILOA002	LOA002
	3.0 mm	ILOA003	LOA003
	4.0 mm	ILOA004	LOA004
	5.0 mm	ILOA005	LOA005
	6.0 mm	ILOA006	LOA006
Included With Each Abutment:			
    			
Housing & Black Processing Male Light Retention Male Extra Light Retention Male Regular Retention Male White Spacer Ring			

LODI System

Implant Diameter	Implant Length	2.5 mm Collar Height Attachment	4.0 mm Collar Height Attachment
 2.4 mm	10 mm	07450	07455
	12 mm	07451	07456
	14 mm	07452	07457
 2.9 mm	10 mm	07460	07465
	12 mm	07461	07466
	14 mm	07462	07467
Included With Each Implant:			
  			
2.5 mm Or 4.0 mm Cuff Height LOCATOR Attachments Male Processing Pack With Block-Out Spacer			

Attachment	Seating Surface	Item#
2.5 mm Cuff Height	2.9 mm Diameter	07351
		
4.0 mm Cuff Height		07352
		

LOCATOR Components & Instruments

Description	Item#
International Model Kit	INTLOC
Extra Light Retention Males - 4pk.	LAELM
Extended Range Males - 4pk.	LAERM
Light Retention Replacement Males - 4pk.	LLRMS
Replacement Males - 4pk.	LARMS
Extra Light Angled Replacement Males - 4pk.	LELARM
Abutment Impression Coping	LAIC1
Abutment Lab Analog	LALA1
Core Tool/Abutment Driver	LCTDR1
Male Removal Tool	LOA8397
Abutment Driver Tip 24 mmL	LOADT4
Abutment Driver Tip 30 mmL	LOADT9
Replacement Housing	LOAH
Hands-On Educational Kit	LOCKIT
Replacement Housing Kit	LORHK

Removable BellaTek® Bar Designs & Components

Description	Item#
Dolder Bars	CSD0x
Hader Bars	CSH0x
Abutment Attachment	LOAB

LODI System Instruments, Surgical Kits & Patient Education Materials

Description	Item#
Implant Latch Driver	07357
Implant Driver, Short	07360
Implant Driver, Long	07361
Torque Indicating Ratchet Wrench	07362
Core Tool with Attachment Holder Sleeve	08393
Attachment Holder Sleeve - 4pk.	08394
Square Driver Torque Wrench Insert	08926
Direction Indicator - 4pk.	07365
Rotary Tissue Punch	07373
Drill Extender	07374
Pilot Drill, 1.2 mm	07366
Drill, 1.6 mm	07367
Drill, 1.8 mm	07375*
Drill, 2.1 mm	07368
Drill, 2.4 mm	07376
Drill, 2.6 mm	07369*
Drill Stops, 6, 8, 10, 12, 14 mm	07420

Standard Surgical Kit - Includes all LODI Surgical Instruments except for LOCATOR Core Tool, Ratchet Wrench and 1.8 mm and 2.6 mm Drills	07421
--	-------

LOCATOR Overdenture Implant Model	09120
-----------------------------------	-------

*Not included in kit.

References

1. G.E. Carlsson and R. Omar. The future of complete dentures in oral rehabilitation. A critical review. J. Oral Rehabilitation. 2010 37; 143-156.
2. C.W. Douglas, A. Shih and L. Ostry. Will there be a need for complete dentures in the United States in 2020? J. Prosthetic Dentistry. 2002 87; 5-8.
3. Suttin Z^{††}, Towse R^{††}. Quantitative and Qualitative Characterization of Various Dental Implant Surfaces. Presented at the European Association for Osseointegration, 20th Annual Scientific Meeting; October 2012; Copenhagen, Denmark. http://www.biomet3i.com/Pdf/Posters/Poster_421_EAO_Final.pdf
4. Zetterqvist L^{††}, Feldman S, Rotter B, Vincenzi G, Wennström J, Chierico A, Stach R^{††} and Kenealy J^{††} A prospective, multicenter, randomized-controlled 5-year study of hybrid and fully etched implants for the incidence of peri-implantitis. J Periodontol. 2010 April;81:493-501. This research was funded by Zimmer Biomet Dental.
5. Boitel N, Andreoni C, Grunder U[†], Naef R, Meyenberg K[†]. A Three Year Prospective, Multicenter, Randomized-Controlled Study Evaluating Platform-Switching for the Preservation of Peri-Implant Bone Levels. Academy of Osseointegration, 26th Annual Meeting: 2011 March 3-5; Washington DC. http://biomet3i.com/Resource%20Center/Publications%20of%20Interest/Platform_Switching_for_the_Preservation_of%20Peri_Implant%20Bone%20Levels.pdf. A Zimmer Biomet Dental sponsored study.
6. Boitel N, Andreoni C, Grunder U[†], Naef R, Meyenberg K[†]. A Three Year Prospective, Multicenter, Randomized-Controlled Study Evaluating Platform-Switching for the Preservation of Peri-Implant Bone Levels. Academy of Osseointegration, 26th Annual Meeting: 2011 March 3-5; Washington DC. http://biomet3i.com/Resource%20Center/Publications%20of%20Interest/Platform_Switching_for_the_Preservation_of%20Peri_Implant%20Bone%20Levels.pdf

* Pre-clinical studies are not necessarily indicative of clinical results.

† Dr.'s Scherer, Grunder and Meyenberg have financial relationships with Zimmer Biomet Dental resulting from speaking engagements, consulting engagements and other retained services.

†† Dr. Kenealy, Dr. Stach, Mr. Suttin, Dr. Zetterqvist and Mr. Towse contributed to the above research while employed by Zimmer Biomet Dental.



Contact us at 1-800-342-5454 or visit

zimmerbiometdental.com

Zimmer Biomet Dental
Global Headquarters
4555 Riverside Drive
Palm Beach Gardens, FL 33410
Tel: +1-561-776-6700
Fax: +1-561-776-1272

Unless otherwise indicated, as referenced herein, all trademarks are the property of Zimmer Biomet; and all products are manufactured by one or more of the dental subsidiaries of Zimmer Biomet Holdings, Inc., and distributed and marketed by Zimmer Biomet Dental (and, in the case of distribution and marketing, its authorized marketing partners). DOLDER is a registered trademark of Professor Eugen Dolder. ZEST and LOCATOR are registered trademarks of Zest IP Holdings, LLC. For additional product information, please refer to the individual product labeling or instructions for use. Product clearance and availability may be limited to certain countries/regions. This material is intended for clinicians only and does not comprise medical advice or recommendations. This material may not be copied or reprinted without the express written consent of Zimmer Biomet Dental. ZB0216 REV A 01 / 18 ©2018 Zimmer Biomet. All rights reserved.

