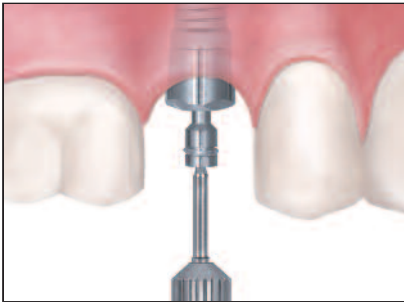


BellaTek[®] IOS & The 3M[™] True Definition Scanner

Clinician Procedure

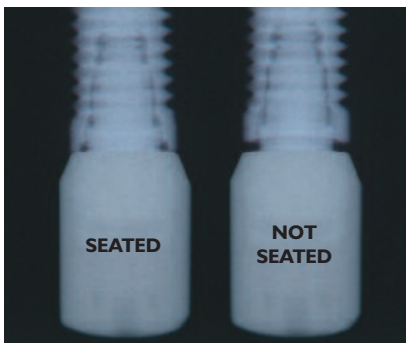


Surgeon

(Please ensure that these instructions are forwarded to the restorative clinician.)

1. Select a BellaTek[®] Encode[®] Healing Abutment with the appropriate restorative platform diameter, Emergence Profile (EP[®]) and collar height.

NOTE: Use tall BellaTek Encode Healing Abutments. The height of the abutment collar, not including the domed occlusal portion, should extend 2.0mm above the soft tissue (1.0mm minimum) on all sides for proper impressing and subsequent scanning. Use wide BellaTek Encode Healing Abutments to ensure that the definitive abutment will seat easily without excessive blanching of the tissue.



2. Place the BellaTek Encode Healing Abutment(s). Ensure that the BellaTek Encode Healing Abutment(s) is fully seated on the implant with a radiograph. BellaTek Encode Healing Abutments have a two-piece design. The body of the healing abutment engages the hex connection of the implant. Bone profiling may be required to fully seat the healing abutment.
3. The BellaTek Encode Healing Abutment Screw should be torqued to 20Ncm using the Large Hex Driver Tip.
4. Suture the tissue around the BellaTek Encode Healing Abutment(s) and allow the tissue to completely heal.



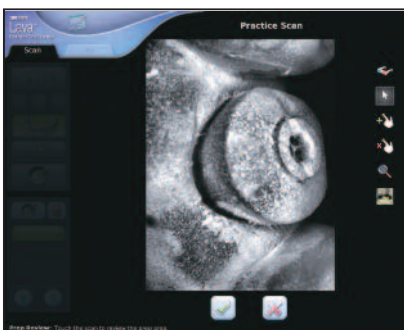
Scanning Clinician

1. After tissue maturation, the BellaTek Encode Healing Abutment(s) is ready for digital impressing. Ensure that the BellaTek Encode Healing Abutment(s) is fully seated on the implant with a radiograph. The height of the abutment collar, not including the domed occlusal portion, should extend 2.0mm above the soft tissue (1.0mm minimum) on all sides. Hand-tighten the BellaTek Encode Healing Abutment(s) before taking an intraoral impression.

2. Pre-Scan Preparation

- When entering a patient's information, only use patient initials for data privacy protection. **BIOMET 3i** will not accept a patient's full name.
- Perform a maintenance check on a regular basis.
- If this is the first time you are scanning a BellaTek Encode Healing Abutment, synchronize the laboratories by selecting Home > Management > Lab > Sync All.
- **Use an appropriate amount of powder.** Sufficient powder is **essential** for data capture. The reflective surface of the BellaTek Encode Healing Abutment's **distal and mesial** areas must be covered in order to prevent an incomplete scan. Reflection of LED light on the metal surface should be avoided.
- Verify that the surface codes and screw-head are not obscured.

Tip: Scanning should be easy. If you are experiencing difficulty, try adding more powder and continue scanning.



BellaTek[®] IOS & The 3M[™] True Definition Scanner

Clinician Procedure (Cont'd)

3. Scanning Workflow

- Begin the scan on the occlusal area of the adjacent tooth next to the BellaTek[®] Encode[®] Healing Abutment and continue scanning the Healing Abutment and contact walls of the adjacent teeth, making sure to capture the complete scan data.
- Review the image(s) to ensure a completely visible BellaTek Encode Healing Abutment and contacts.
- Scan the remainder of the operative quad/arch, opposing arch and bite. Review and approve each with a checkmark or select the X mark to start over.

4. Enter The Prescription

- Select the **Rx Tab** on the scan screen to display the prescription screen.
- Request a delivery date.
- Select the **Restorative Lab** to be used.
- Select the correct dentist submitting the scan.
- Touch the screen to select the restoration.
- Select **BIOMET 3i[™] Implant Abutment** for restoration type and then select the tooth number.

NOTE: If a BIOMET 3i Implant Abutment is **NOT** selected, the case will not be processed as an implant case.

5. Define The Abutment Design Parameters

- Touch the **00 BIOMET 3i Facility** line and select the correct BIOMET 3i Manufacturing Facility in either the U.S. or Europe.
- Complete lines 01-12 to set the design parameters and desired material for the abutment. If no design parameters are selected, BIOMET 3i will use the standard default settings.
- Line 13 **Design File Check and Approval** allows you to request abutment design approval from the **clinician, laboratory or none** before milling.

6. Design The Restoration

- To specify the restoration parameters for your laboratory, select Add Restoration.
- Follow the on-screen instructions and review the information.

7. Complete The Prescription

- Select the **Sign** button to display the Rx Digital Signature Screen.
- Enter your PIN to complete the prescription.

8. Send the case electronically to BIOMET 3i for designing and milling of the definitive abutment(s).

9. The definitive abutment(s) will be sent to the restoring laboratory. The SLA model production facility will send the working model to the laboratory.

IMPORTANT NOTE: Slight variations in the manufacturing process for both rapid prototyped models (milled or printed) and milled BellaTek Abutments, may result in a restoration that fits differently on the abutment and die. The laboratory must complete a fit-check on the abutment prior to delivery of the abutment, model and restoration. BIOMET 3i recommends a 50 micron cement gap for all BellaTek Encode Impression System cases utilizing an intraoral scanner. This process is indicated for single units.

Not Available In All Markets. Please Contact Your Local BIOMET 3i Sales Representative For Availability.



BIOMET 3i
4555 Riverside Drive
Palm Beach Gardens, FL 33410
1-800-342-5454
Outside The U.S.: +1-561-776-6700
Fax: +1-561-776-1272
www.biomet3i.com



BIOMET 3i
Dental Iberica S.L.
WTC Almeda Park, Ed. 1, Planta 1ª
Pl. de la Pau, s/n
08940, Cornellà de Llobregat
(Barcelona) Spain
Phone: +34-93-470-55-00
Fax: +34-93-371-78-49



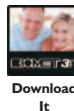
Join Us



Follow Us



Watch Us



Download It

BellaTek, BellaTek design, Encode and EP are registered trademarks of BIOMET 3i LLC. Providing Solutions – One Patient At A Time is a trademark of BIOMET 3i LLC. 3M is a trademark of 3M or 3M Deutschland GmbH. ©2013 BIOMET 3i LLC.

All trademarks herein are the property of BIOMET 3i LLC unless otherwise indicated. This material is intended for clinicians only and is NOT intended for patient distribution. This material is not to be redistributed, duplicated, or disclosed without the express written consent of BIOMET 3i. For additional product information, including indications, contraindications, warnings, precautions, and potential adverse effects, see the product package insert and the BIOMET 3i Website.



INST1161
REV A 06/14