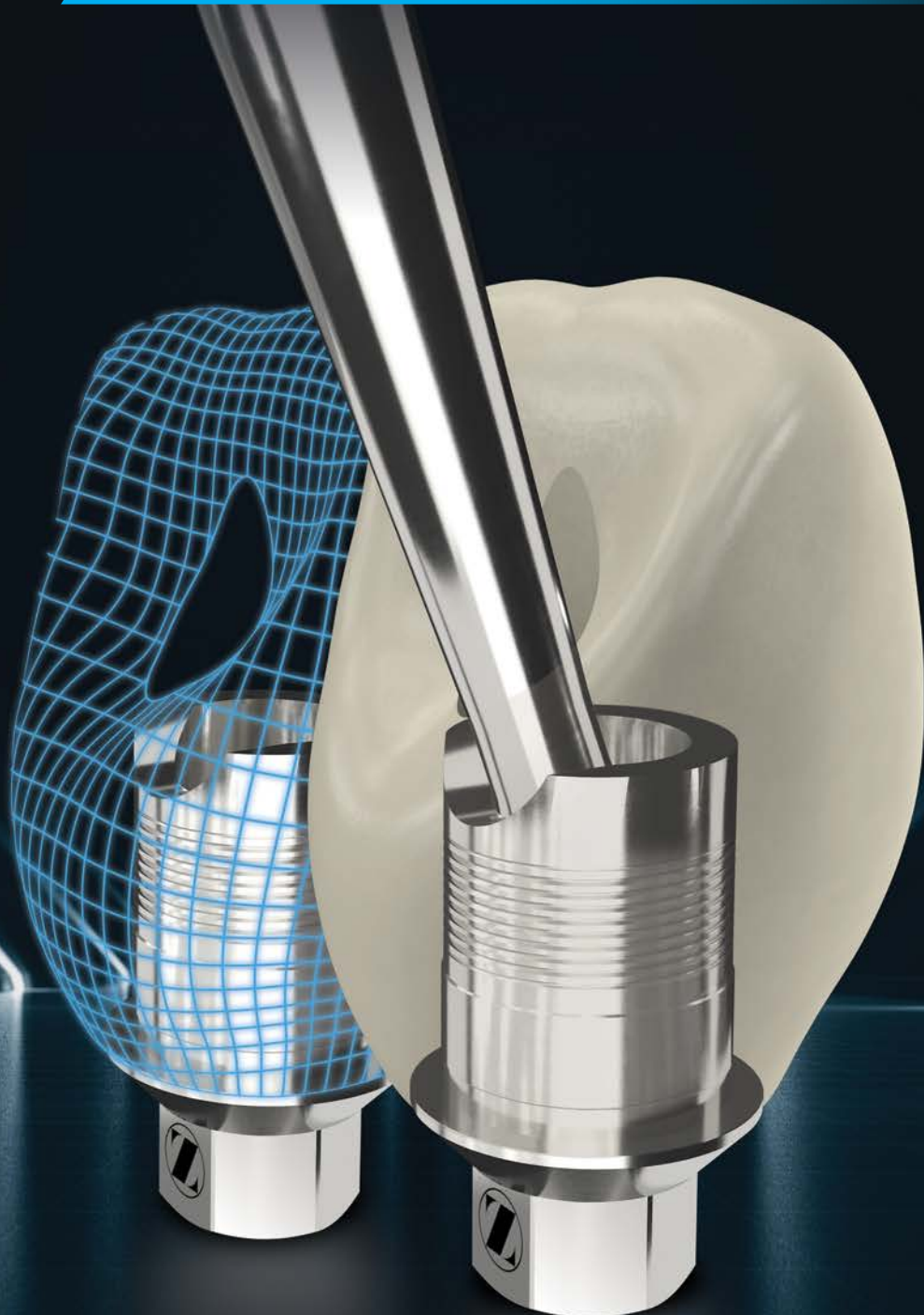


TSV[®] BellaTek[®] Express And Flex Abutments

What Ti-Bases Were Meant To Be



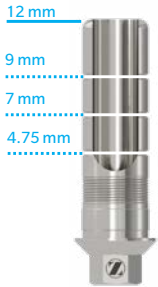
Design Features And Benefits

Get Restorative Flexibility, Efficiency and Strength

TSV BellaTek Express and TSV BellaTek Flex are the original cement- or screw-retained abutments for angled screw access channel restorations for Zimmer Biomet Dental Tapered Screw-Vent® (TSV) Implants. Add efficiency to your CAD/CAM single- or multi-unit implant restorations workflow with the flexibility of adjusting the abutment at four different heights, and support with thicker abutment walls on wider implant platform diameters.

Unrivalled Flexibility

The TSV BellaTek Flex Abutment provides a unique 12 mm post for cases that demand taller heights with greater surface for bonding to the crown. Machined grooves on the abutment's post indicate height adjustments at 4.75, 7, 9 and 12 mm. Leave the abutment at 12 mm or cut it at one of the three indicated heights that best fits your case and digitally design the crown from the library files with the matching heights on your preferred software.



Convenience Within Reach

The TSV BellaTek Express Abutment conveniently comes at 4.75 mm post height, providing efficiency for cases that do not require taller heights.



Hexalobular Driver Tip
Geometry
For Angled Engagement



Enabled Angles For Versatility

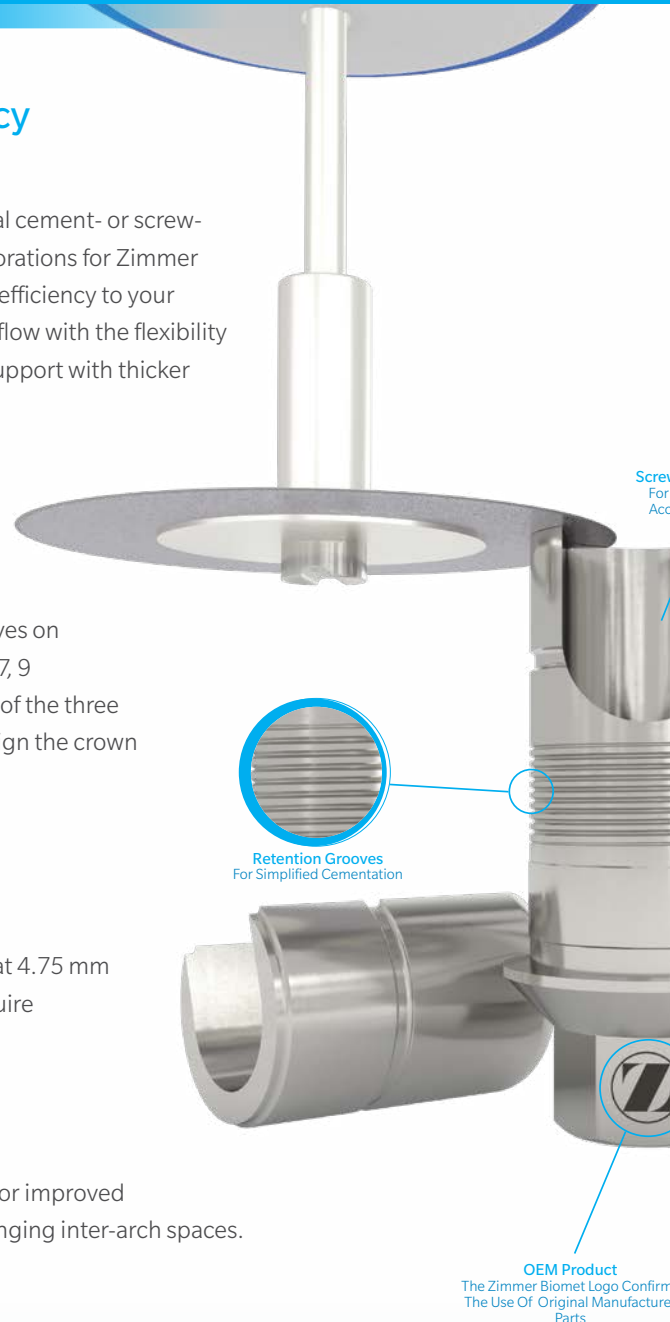
Place the Angled Screw Channel anywhere from 0 to 25° for improved aesthetics in anterior cases and for better access in challenging inter-arch spaces.

Multi-Unit Cases Unlocked

The TSV BellaTek Express and Flex Abutments are also available for multi-unit cases. The non-engaging connection allows for the freedom of rotation ideal for making multi-unit bridges.

Added Strength On Wider Platforms

Different than other Ti-base type abutments in the market, the post wall of TSV BellaTek Express and Flex Abutments thicken in wider platform diameters, providing additional support for larger restorations.



Retention Grooves
For Simplified Cementation

OEM Product
The Zimmer Biomet Logo Confirms
The Use Of Original Manufacturer
Parts



BellaTek Encode® Workflow

Optimization By Design®

Take Full Advantage Of The BellaTek Encode Impression System Workflow

The BellaTek Encode Impression System is designed to streamline the treatment process for the surgeon, restorative clinician and laboratory by eliminating the need for implant level impressions. In addition, patients have a better experience and a beautiful aesthetic outcome as compared to traditional techniques using impression material and copings. Design and mill CAD/CAM single- and multi-unit restorations from BellaTek Encode Healing Abutments scans or impressions.

Library files for Zimmer Biomet TSV Lab Scan Bodies are also available. To download, access www.zimmerbiometdental.com/libraryfiles.



Low Channel Slot
Angled Driver
Access Up To 25°



Anti-Rotation Notch
For Crown Seating On
Single-Units

BellaTek Encode Impression System Workflow Options:

1. BellaTek Encode Empowered Laboratory (EELs): Through a non-exclusive license, the EELs have access to the BellaTek Encode Impression System Libraries and can receive a scan file or a scan of BellaTek Encode Healing Abutments for the CAD/CAM workflow.
2. Work with a **Hub BellaTek Encode Empowered Laboratories (Hub EELs)** that can receive a scan or scan a BellaTek Encode Healing for decoding and providing other lab-to-lab services. For a list of Hub EELs please visit www.zimmerbiometdental.com/HubEELs

Digital Laboratory Analogs for 3D Printed Models

Integrating with TSV BellaTek Express and Flex Abutments workflow, the TSV Implant Digital Lab Analogs are designed to be used with CAD/CAM fabricated models to accurately replicate implant placement for the creation of definitive restorations through digital workflows.



Why Settle For Lookalikes When You Can Have The Real Thing?

Zimmer Biomet offers a full range of premium dental solutions that imitators can't match. Yes, they may look the same, but it's the quality and innovation of our implant and abutment systems that set the standards for the industry. Systems designed to work together, verified compatibility, personalized service, and proven performance are what differentiate us from the doppelgängers of the world. Be sure to choose genuine Zimmer Biomet Implants and Abutments. For your patients. For your practice.



TSV BellaTek Flex with
TSV ASC Screw and
TSV Implant 4.5 mmD

Ordering Information



TSV BellaTek Express and Flex Abutments

Seating Surface	TSV BellaTek Express		TSV BellaTek Flex	
	Hexed	Non-Hexed	Hexed	Non-Hexed
3.5 mm	TE351	TE352	TF3121	TF3122
4.5 mm	TE451	TE452	TF4121	TF4122
5.7 mm	TE551	TE552	TF5121	TF5122



BellaTek Encode Two-Piece Healing Abutments

Seating Surface	Emergence Profile	Collar Height		
		3 mmH	5 mmH	7 mmH
3.5 mmD	3.8 mmP	TEHA3383	TEHA3385	TEHA3387
	5 mmP	TEHA3503	TEHA3505	—
4.5 mmD	5 mmP	TEHA4503	TEHA4505	—
	5.6 mmP	TEHA4563	TEHA4565	TEHA4567
5.7 mmD	6 mmP	TEHA4603	TEHA4605	—
	6.8 mmP	TEHA5683	TEHA5685	—



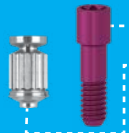
Angled Screw Channel Drivers and Tips

Description	Item No.
TSV Angled Screw Channel Driver 24 mm	TASCD24
TSV Angled Screw Channel Driver 30 mm	TASCD30
TSV Angled Screw Channel Driver Tip 24 mm	TASCT24
TSV Angled Screw Channel Driver Tip 30 mm	TASCT30

TSV Angled Screw Channel Drivers are compatible with Torque Wrench, Restorative (TWR).
TSV Angled Screw Channel Tips are compatible with Low Torque Indicating Ratchet Wrench (L-TIRW).

TSV Digital Analogs

Seating Surface	Item No.
3.5 mm	LATSV35
4.5 mm	LATSV45
5.7 mm	LATSV57



Description	Item No.
TSV ASC Screw	MHLASC
Low Torque Indicating Ratchet Wrench Standard ISO 1797 Adapter	C9980
TSV Implant Digital Lab Analog Placement Tool	LATTSV



ZIMMER BIOMET
Your progress. Our promise.

Contact us at 1-800-266-9920 or visit zimmerbiometdental.com

Zimmer Biomet Dental
Global Headquarters
4555 Riverside Drive
Palm Beach Gardens, FL 33410
Tel: +1-561-776-6700
Fax: +1-561-776-1272

ZB Dental India Pvt. Ltd.
904/905, A-Wing,
Damji Shamji Corporate Square,
Pant Nagar, Ghatkopar East,
Mumbai – 400075 (INDIA)
Tel.: +91-22-6901-3700
Email: customercare.indiadental@zimmerbiomet.com

Unless otherwise indicated, as referenced herein, all trademarks are the property of Zimmer Biomet; and all products are manufactured by one or more of the dental subsidiaries of Zimmer Biomet Holdings, Inc. and marketed and distributed by Zimmer Biomet Dental and its authorized marketing partners. For additional product information, please refer to the individual product labeling or instructions for use. Product clearance and availability may be limited to certain countries/regions. This material is intended for clinicians only and does not comprise medical advice or recommendations. Distribution to any other recipient is prohibited. This material may not be copied or reprinted without the express written consent of Zimmer Biomet Dental. ZB0999IN_EN REV B 06/21 ©2021. Zimmer Biomet. All rights reserved.

